

## Library continues to reach out to one and all - old and young

"What I'd really like is to get some teen age volunteers for a teen advisory board," stated Clark librarian Kim Taylor who has recently re-organized her young adult section in the north end of the library located in the Ullyot building.

"We've received a lot of books since last summer from the authors themselves which is exciting. Some have even signed it for us," noted Taylor. One cute children's book with photographs of the author's children as part of the story is titled *She yelled - I screamed - She pulled my hair!* by Tracy Leshay. *Police Cat, One World, One Day* and *The Princess who had no kingdom* are also new and interesting books for young readers.

Taylor is currently busy with inventory and the paper work required to keep the library accredited. She is also working on continuing her education to keep her certification. Taylor takes many webinars during the month to keep current at the local library.

"I need communication from the community," continues Taylor, "so I know what you'd like to read so I can get those books for you."

Taylor has a reading preference questionnaire that she has people fill out and turn in. She will in turn get back to them with a list of books that will cater to their reading preferences.

"We have so much to offer here at our nice, quiet, comfortable library. It's a bully-free zone, too," smiled the librarian.

"Our LearningExpress library is unique for one to take practice exams. For their GED or college exams for instance, it's test prep for



Librarian Kim Taylor at the Emil M. Larson library is shown putting away some of the new books in her newly organized young adult section in the back part of the library. She's holding three books in the Maze Beset Trilogy by Lee French. Books by Skye Genaro, Robert Boyd, DR Martin and Jen Minkmen are also new to the library.

wide range of standardized tests and offers skill building in reading, writing and math."

The Chilton How-to books library and researching on the library edition of AncestryLibrary can also be accessed at the Clark Library.

They have two computers for use along with a librarian who can give instructions on the computer and a Kindle that can be used 'in house'. Many new DVDs are also available in the library's collection.

The South Dakota Overdrive or Titles to Go program can be set up through Taylor which enables one to download books to their personal reading devices, iPads, ebook readers or cell phones after signing up with the program.

The World Book Public Library

Edition, Proquest 2000+ and Mango Languages can also be accessed through the library.

Taylor is also adding more books in the Spanish language. Books on tape for the blind and visually impaired is a program that Taylor can also help one get set up with, receiving tapes at home on a machine provided at no charge to the recipient.

After a recent webinar, Taylor decided it would be a fun idea to have a logo contest for the library in the near future, in promotion of the Emil M. Larson Library.

"The Clark Library is also on Facebook," ended Taylor, "with the name Emil M. Library of Clark, SD."

## Lent begins with Ash Wednesday services

Next Wednesday, February 10, Ash Wednesday begins the Easter Lenten Season with most churches in the area starting the first of a season of worship services.

In Clark, an ecumenical service will be held at the St. Paul Lutheran Church, starting at 7:30 p.m.

St. Michael's Catholic Church in Clark will hold their Mass with distribution of Ashes at 5:30 p.m. In Henry, at St. Henry's Catholic Church, the Ash Wednesday service will be at 7:30 p.m.

In Carpenter, the United Meth-

**Ash Wednesday**  
(continued on page 3)

## Court trial to begin Monday

A trial will be held beginning at 8:30 a.m. next Monday at the Clark County Courthouse.

Donald Dunlavy is charged with 12 counts of Grand Theft of cattle. Each count is a Class 6 felony, which is up to two years in the Penitentiary and a \$4,000 fine. If convicted, Mr. Dunlavy could receive a maximum of 24 years in the Penitentiary and a \$48,000 fine.

This will be a bench trial, heard by Judge Carmen Means. A bench or court trial is a trial where the judge hears all the evidence and de-

**Court trial**  
(continued on page 4)

## City discusses best options in preparing to replace ash trees

The first half hour of the February meeting of the Clark City Council was spent talking trees. More specifically, what will be the plan to replace the many ash trees in the community.

The emerald ash borer (EAB) has devastated the ash tree population in the eastern United States. Tom LaBrie, representing the Clark Rotary Club, was in attendance at Monday's meeting, talking of a Rotary Tree Park, or steps which could be taken, as the community does have a large percentage of ash trees.

"EAB was spotted in St. Paul," began LaBrie and he noted that he has been in contact with city employee Roger Collins as to what steps, or partnerships could be created to help combat this beetle infestation and subsequent loss of ash trees.

LaBrie spoke of resources available, what trees would be options for replacement and that getting trees started to prepare for this onslaught of EAB would be in the city's best interest.

"The new state forester for our region, the individual who replaced Craig Brown lives in Clark. His name is John Livermore and he offered to take a GPS inventory of all public areas in the city," said LaBrie.

Mayor Larry Dreher liked the idea of Livermore to GPS all trees, at no expense to the city. "Let's keep this on the front burner and remain proactive," the mayor said

of this tree planning project and he commented that he appreciated the role the Rotary Club has played with boulevard trees.

"A rotary/city partnership could be possible here," LaBrie ended.

### Annexation Study

The council approved going forward with the annexation study for the city of Clark through First Planning District. Boundaries for this study were set up:

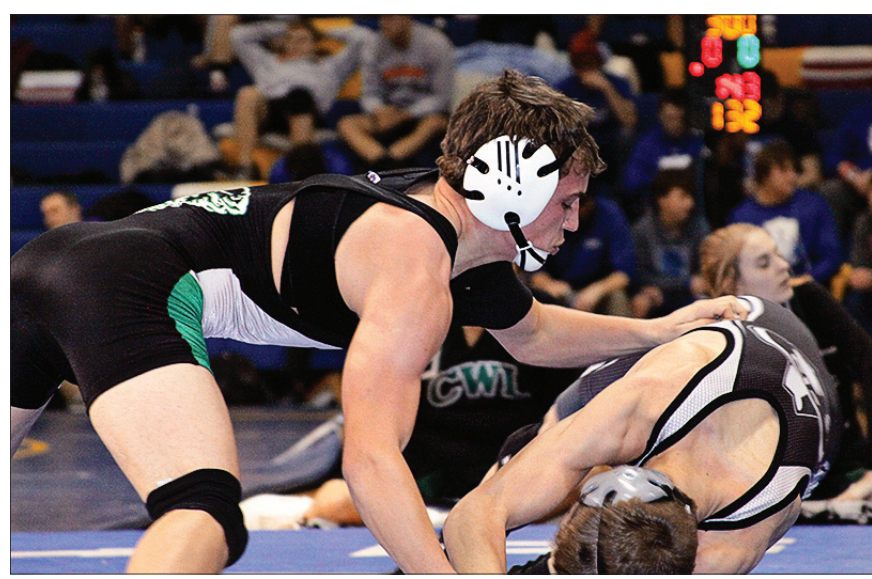
Along US Highway 212, east to the Chris and Mel Bokinskie corner; west to the road (on the west edge) of the Clark Farmers Elevator Fertilizer plant; north to the county road north of St. Boniface Cemetery; south to the end of all adjacent buildings and this includes everything east of S. Kansas St. and the sewer plant. Dreher stated that this is merely a study at this time just a starting point in the annex

**City**  
(continued on page 4)

### WEATHER

Ryan Eggleston - Official Weather Observer

	HI	LO	PR
Jan. 26 .....	24	4	0
Jan. 27 .....	37	16	0
Jan. 28 .....	34	28	0
Jan. 29 .....	37	27	0
Jan. 30 .....	40	28	0
Jan. 31 .....	35	22	0
Feb. 1 .....	31	17	0
2016 precipitation to date			.40
2015 precipitation to date			.33



## February means athletic post season tourneys are in the near future

January and February have to be good for something in the frozen tundra we call paradise. Winter sports draw a huge following and Cyclone wrestling, girls basketball and boys basketball are having very successful 2015-16 campaigns. As February progresses, post season tournaments will be upon us.

This week is like all winter weeks, a very busy one on the sports calendar. This Saturday is the Big East/LCC wrestling tournament in Arlington. On Tuesday, February 9, the wrestlers have a Triangular in Clear Lake.

The girls basketball team is in action on Friday against Redfield-Doland in Redfield. Two doubleheaders with both the boys and the girls teams will take place on Saturday when they travel to Castlewood and Tuesday against Tiospa Zina at Agency Village.

Cyclone boys basketball team will also play Redfield-Doland at Willow Lake on Thursday. At left, Rory Forest drives to the basket for two points in the Cyclones' 65-50 win over Britton-Hecla, Saturday in Clark.

Top middle, Josh Weisbrod was crowned 126 lb. champion at the Lee Wolf tourney in Aberdeen on Saturday as was Wyatt Burke at 152 lb. in the bottom middle photo.

Jess Karber, at 145 lb., made it three Clark-Willow Lake wrestlers to claim a championship in Aberdeen. At right, Angela Young goes up strong to grab one of her 12 rebounds against Britton-Hecla, Saturday at the C.H.S. gym. Clark-Willow Lake defeated Britton-Hecla, 46-36. Congratulations to all of the fine Cyclone programs.



# Sweet Deal!

Sign up for TV during February

Get: 2 Months Free HD  
2 Months Free WHDVR  
3 Free VOD Movies (\$4.99 or less)

Current Customers will be entered in a drawing for two - \$50 ITC bill credits!

1.800.417.8667 Call for availability  
Expires 2/29/16

