

Clark County Courier

The voice of Clark County since 1880



Wednesday, November 2, 2016

Vol. 136, No. 18

www.clarkcountypublishing.com

\$1.00

The hometown newspaper of Bonnie (Peterson) Glock, Bozeman, MT



In keeping with tradition, Paul Sum of Omaha, Neb. is usually in the fields of South Dakota hunting pheasants on his birthday. This past October 28 was no different as Sum was joined by six friends and four hunting dogs when the group met in Willow Lake this past weekend.

Shown from left to right are Tim Holland, the birthday boy - Paul Sum and his dog 'Peaches', Bill Wind and his dog 'Jazz', next to 'Hazel' and her owner Bob Johnson, kneeling down is Blaine Gulbranson and his dog 'Lena', Tim Dunning and Jack Borgmeyer.

Dogs and hunters alike enjoy annual birthday pheasant hunt near Carpenter

"I always spend my birthday hunting pheasants in South Dakota," acknowledged Paul Sum of his annual pheasant hunting expedition along with friends to the fields of the Madsen family near Carpenter.

"We appreciate the hospitality here - a lot!" exclaimed the hunting group who arrived in Willow Lake

at the hotel last Thursday. From the hotel to the eating places to even the gas stations, the hunters appreciate feeling welcomed by the people of South Dakota.

"Perfect strangers will ask us how we're doing and how the hunt is going," added Blaine Gulbranson of Alexandria, Minn., a long time hunting partner of Sum's, starting

when he lived in Omaha.

A retired career man with the U.S. Air Force, Gulbranson started Sum hunting pheasants in northeast Nebraska. At one time a hunting guide in Colorado, avid hunter Gulbranson can't remember the

Pheasant hunt
(continued on page 9)

It's Eric Caulfield versus Chris Sass in the District 2 Clark County Commission race

In addition to the general election, voters in District 2 in Clark County will be selecting a commissioner when they go to the polls on Tuesday, November 8.

The polls will be open from 7:00 a.m. to 7:00 p.m. The District 2 Clark County Commissioner race will have Eric Caulfield and Chris Sass, both running as Independents.

The candidates were asked these questions and given word limitations for their answers.

Please tell us about yourself, family, education, occupation, civic/community activities, etc.

Caulfield: My name is Eric Caulfield. I live in Bradley with my family, Jessica, Cora and Louie. I operate The Body Shop in town on Main Street. I graduated from WyoTech, Laramie, Wyo. with an Associates in Collision Refinishing/Custom Paint. I am a member of the Town Board in Bradley.

Sass: My name is Chris Sass. I grew up on a farm north of Bradley. I graduated from Webster High School and then received a degree in Diesel Technology from North Dakota State College of Science. I worked as a tractor mechanic at Codington-Clark Equipment for 12 years and then Westside Implement for seven years as a salesman. Four years ago I took over the family farm and sell seed with CK Seeds.

I am married to Amy Sass who



Eric Caulfield

is a teacher at the Henry School District. We have three wonderful girls who attend the Clark School District. Olivia is a freshman, Ella is in the first grade and Alayna is in preschool. We are active in 4-H and I am a member of the Bradley Fire Department.

What is your motivation in seeking the office of commissioner and what are your goals?

Caulfield: My motivation is to help Clark County be a model county for family living, farming and small businesses. My goal is to do the best I can and listen to all our constituents.

Sass: Mainly I would like to give back to the community, by being a voice for the people. I also would like to know more how the county government works and see what I



Chris Sass

can offer to make it better.

What do you feel should be the top three Agenda Priorities for the Clark County Board of Commissioners?

Caulfield: I would like to ensure all county employees have what they need to do their job effectively. I would like to ensure all taxes are appropriate for the property and reduce any over/under taxing. I would like to boost County Development and help the county keep up with the times.

Sass: Roads are always a topic. Some have gotten a lot better but I feel we still have room for improvement. The second would be to get up to speed with technology so communication is better between every-

Commission race
(continued on page 3)

Do not forget to vote on Election Day, November 8

The long awaited end to the 2016 Presidential election is less than one week away. Election 2016 will be held on Tuesday, November 8 with polls being open from 7:00 a.m. to 7:00 p.m. Any voter in line at 7:00 p.m. will be allowed to complete the voting process.

Secretary of State Shantel Krebs stated, "As the Chief Elections Officer for South Dakota, it is my responsibility to ensure the integrity of the elections process. We want your experience to be fair, transparent and secure. In order to assist voters across South Dakota on Election Day, the Secretary of State's office has compiled a list of 'election day tips'.

Election Tuesday, November 8, 2016. The polls are open from 7:00 a.m. to 7:00 p.m., local time.

Voter ID requirements: South Dakota protects against voter fraud on Election Day. Voter ID is a requirement to vote. You must present some type of government issued ID, such as a SD drivers license, a state issued non-drivers license ID, tribal ID, passport, regents university photo ID, high school photo ID.

If you do not have an acceptable form of ID you must be presented with a personal identification affidavit that you will sign under the penalty of perjury in which you state you are who you are.

Poll Watcher: We encourage citizens to become involved on Election Day, as anyone can be a poll watcher or poll observer. South Dakota law allows poll watchers and observers to be present to observe the voting and counting activity and provides guidelines for poll watchers and observers. For more information visit SDSOS.GOV <<https://sdsos.gov/elections-voting/assets/PollWatcherObserverGuidelines.pdf>> of contact your County Auditor. You will likely see poll watchers at your precinct on Election Day.

Voter Hotline Number: If you feel your voting rights have been violated, you may call the county au-

ditor, the Secretary of State at 888-703-5328, or your state's attorney. Please be sure to make that phone call before you leave the voting precinct location. The number will be posted twice at all polling locations.

No Ballot Selfies: Any voter who shows his/her voted ballot to another person is in violation of South Dakota Codified Law 12-18-27. Do not photograph a marked ballot for distribution on social media.

Download VOTE 605 App: To view your sample ballot or find your polling place on your smart phone, download the VOTE 605 App on Google Play or the App Store. You can also view your sample ballot at SDSOS.GOV

Authorized Messenger: If a voter is confined due to sickness or disability, that voter can use an authorized messenger to bring the ballot to them. There is a section on the application for absentee ballot where the voter will indicate who they want to bring their ballot to

them. The deadline for this option is 3:00 p.m. on Election Day.

The polling places for Clark County are:

#1: Blaine Township, Cottonwood Township, Spring Valley Township, Warren Township and Town of Bradley at the Bradley Community Center, Bradley SD.

#2: Ash Township, Woodland Township, Garfield Township and Elrod Township at the Clark County Courthouse basement.

#3: Raymond Township, Logan Township, Raymond Town and Fordham Township at the Raymond Fire Hall, Raymond SD.

#4: Thorp Township, Maydell Township, Eden Township and Town of Garden City at the Prairie Ridge Lodge, Garden City SD.

#5 Mt Pleasant Township, Day Township and Darlington Township at the Clark County Courthouse basement.

#6 Foxton Township, Merton Township and Town of Naples at the Clark County Courthouse basement.

Election Day
(continued on page 3)



Delmer Stern involved in fatal accident, Friday

It is with a heavy heart that we announce the fatal accident involving Garden City-Clark farmer/rancher Delmer Stern.

Stern was moving cattle last Friday afternoon and northbound on 432nd Avenue near the intersection of 167th Street.

According to the South Dakota Department of Safety release: "The vehicle, a 1999 Freightliner, failed to stop at the stop sign, went into

the intersection and collided with a westbound 2001 Peterbilt semi pulling an empty belly dump trailer.

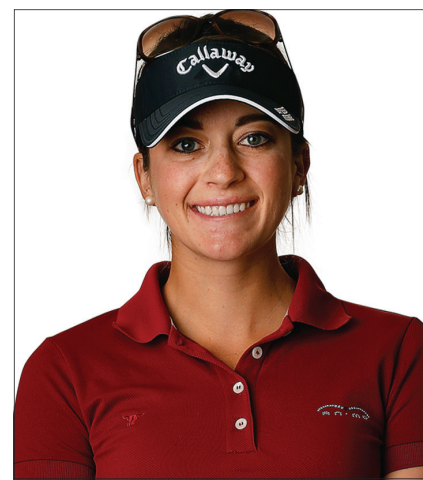
"The Freightliner eventually went into the ditch and was engulfed in flames. The driver, Delmer Stern, 60, died at the scene. Manuel Waldner, 53, also of Garden City, was driving the other semi. He was not injured."

Kaufman ties for seventh in LPGA tourney at Malaysia

Clark native Kim Kaufman tied for seventh in the Sime Darby LPGA Malaysia tournament that concluded Sunday in Kaula Lumpur, Malaysia.

She closed with a 3-under par 68 on Saturday and a 4-under 67 on Sunday to finish the tourney with a 10-under 274 (69-70-68-67). Kaufman earned \$48,119, pushing her season earnings to \$352,079. The latest earnings moved her past the \$1 million mark for her LPGA career that began in 2014.

Shanshan Feng, won the tourney with a 17-under 267. Feng beat Suzann Pettersen by three strokes, shooting a 4-under 67 after finishing off a third-round 64 in the



Kim Kaufman

morning. Kim is the daughter of Terry and Teresa Kaufman of Clark.



Big C Travel Plaza gearing up for a big week!

It's official! The new Clark Community Oil-Cenex Big C Travel Plaza is now open and the Grand Opening is all of next week.

Check out the back page for many things the new convenience store has to offer.

Big C Travel Plaza manager Belinda Hanson said she's been awfully busy, "But things are going well. It's really been a lot of fun getting our new store ready."

Store hours are from 5:30 a.m. to 10:30 p.m., seven days a week.



That's right, it's time to "fall back". Central Standard Time begins and Daylight Saving Time ends at 2:00 a.m. on Sunday, November 6.

This means it's time to turn your clocks back one hour before going to bed Saturday night.

Mystery Snowman Clue
48th Annual
Snow Queen Festival
Mystery Snowperson Contest
I played basketball for the Mustangs.
I have "ROAD" all of Clark County
Send guesses to Janene Gehrke,
209 1st Ave. W.,
Clark, SD 57225.

Let ITC Sugar Coat Your Holidays With Some Dough!
Sign up for new service!

1 Service = \$50
2 Services = \$75
3 Services = \$100

Also stop by one of our offices to choose a cookie cutter. You could win an iPad Mini! No purchase necessary. Kids pick up a coloring sheet to enter our coloring contest!
*Must ask for the promotion at the time of sign-up. Services include Internet, TV, and/or Phone. Payment is VISA card. Coloring sheets and more info at www.itc-web.com. Offer expires 12/16/16.